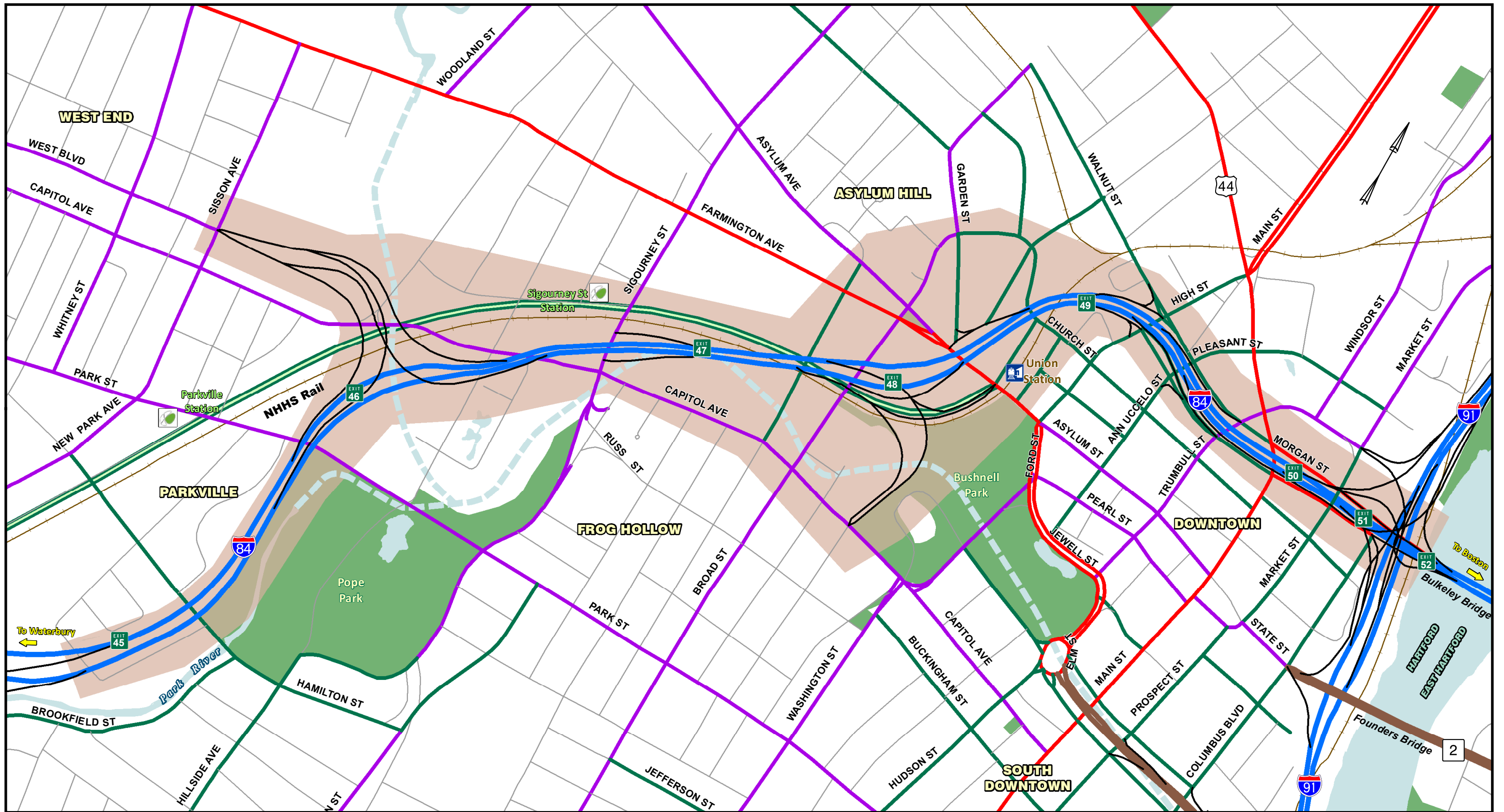


C. Environmental Resource Maps



LEGEND	Principal Arterial - Interstate (Urban)	CTfastrak Station	I-84 Exit #	Park River Conduit
	Principal Arterial-Other Expressway (Urban)	CTfastrak	Union Station	Ramp
	Principal Arterial-Other (Urban)	Railroad	Park	Town/City Limit
	Minor Arterial (Urban)	Project Corridor	Water	
	Collector (Urban)			
	Local (Urban)			

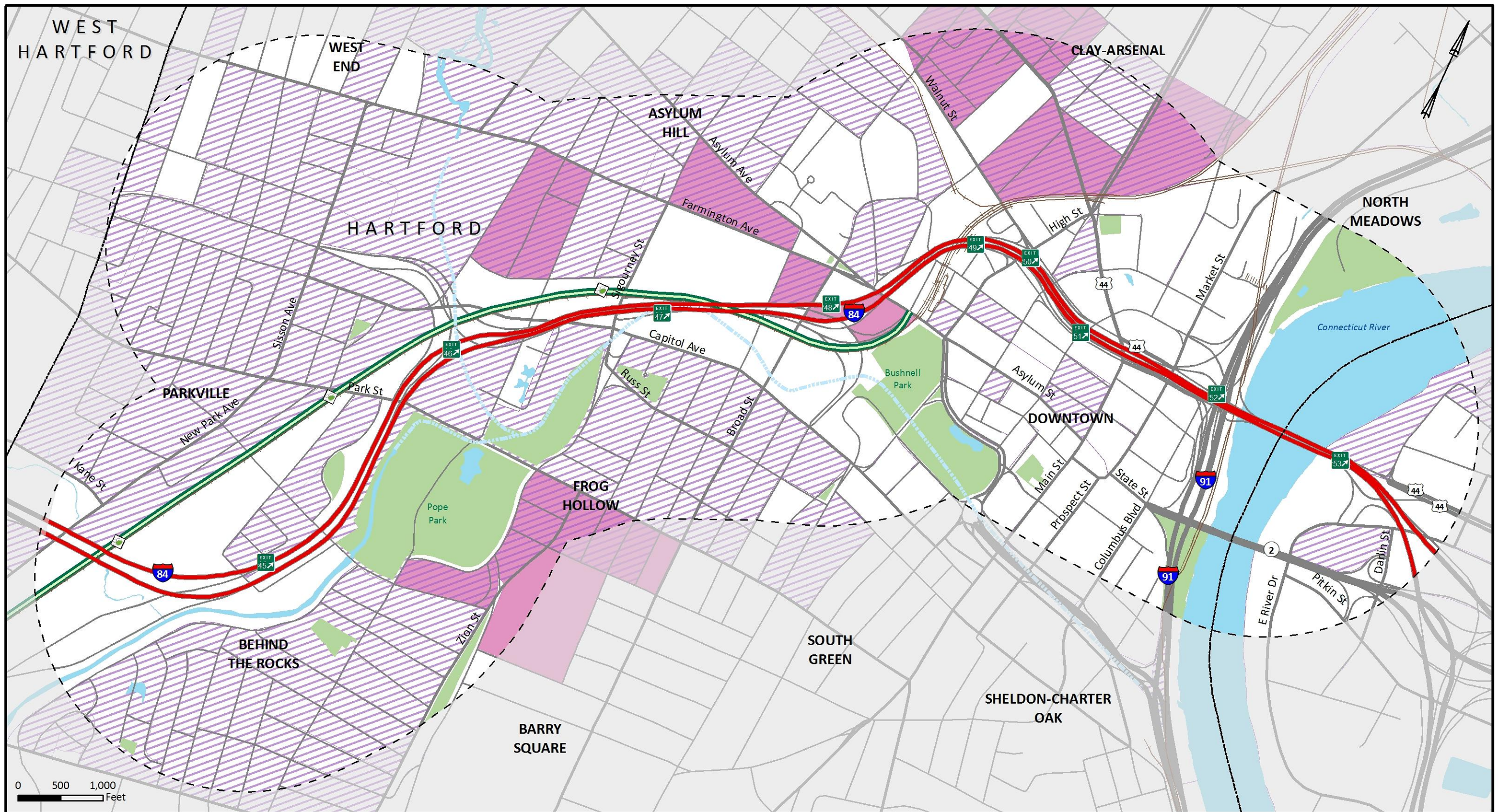
The I-84 Hartford Project

Project Corridor

Drawn By: TranSystems



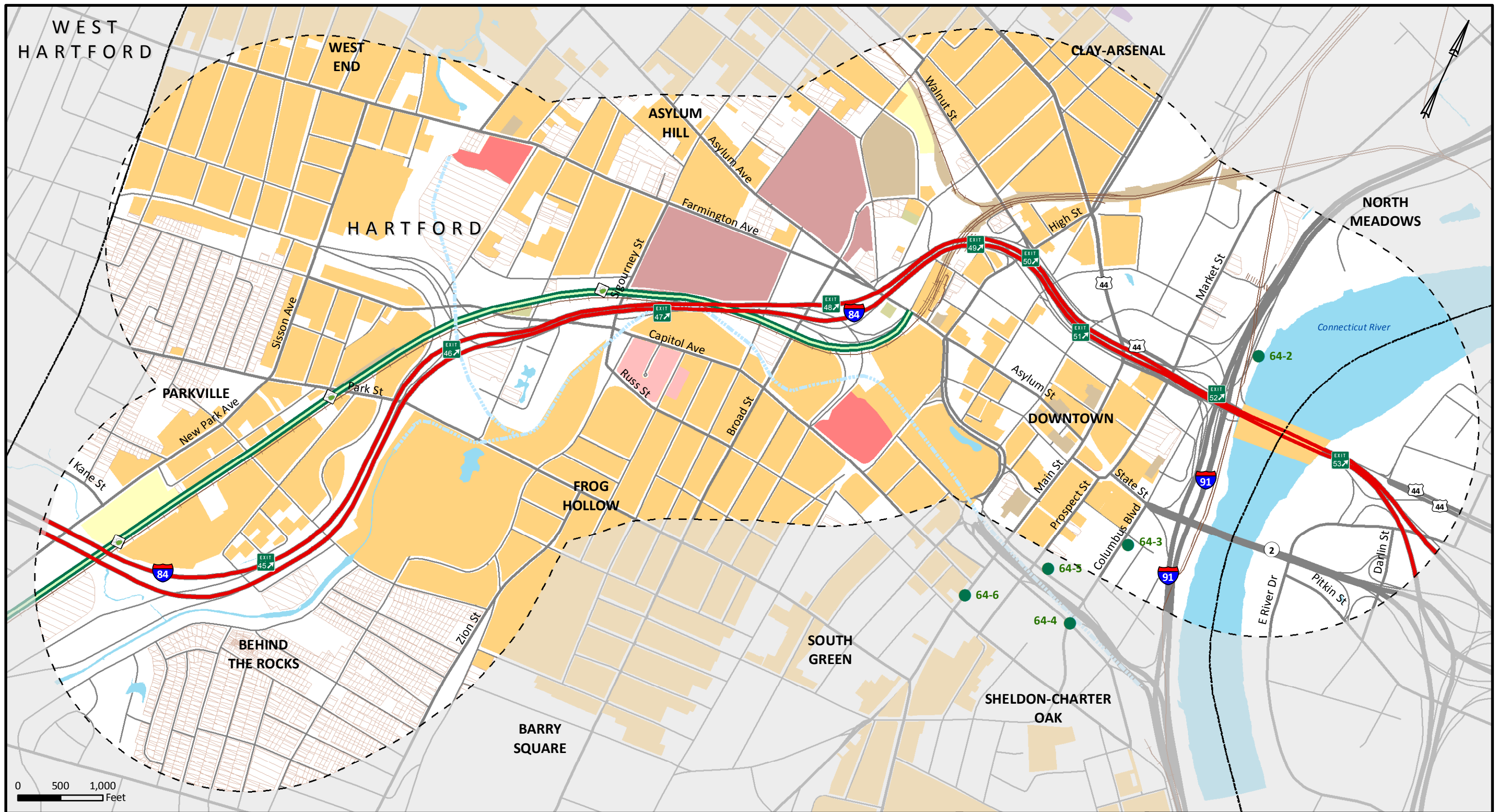
Sources of Data: City of Hartford, ESRI
<http://www.ctfastrak.com/>



LEGEND	I-84 Exit	Interstate Highway	Park River Conduit	EJ Population - Minority
	CT Fastrak Station	US Highway	Park	EJ Population - Below Poverty Level
	I-84	Major Road	Water	EJ Population - Minority and Below Poverty Level
	Study Area	Local Road		
	City Boundary	Railroad		
	CT Fastrak			

Sources of Data: City of Hartford, US Census Bureau 2010, ESRI
 Notes: Colors/elements outside of study area muted intentionally. EJ blocks/block groups are defined by percent (> 50%) minorities and by percent (> 50%) below poverty level. Blocks without residents excluded from groups.

The I-84 Hartford Project	
Environmental Justice Populations Map - Minorities and Below Poverty	
Date: 12/4/2014	Drawn By: AECOM

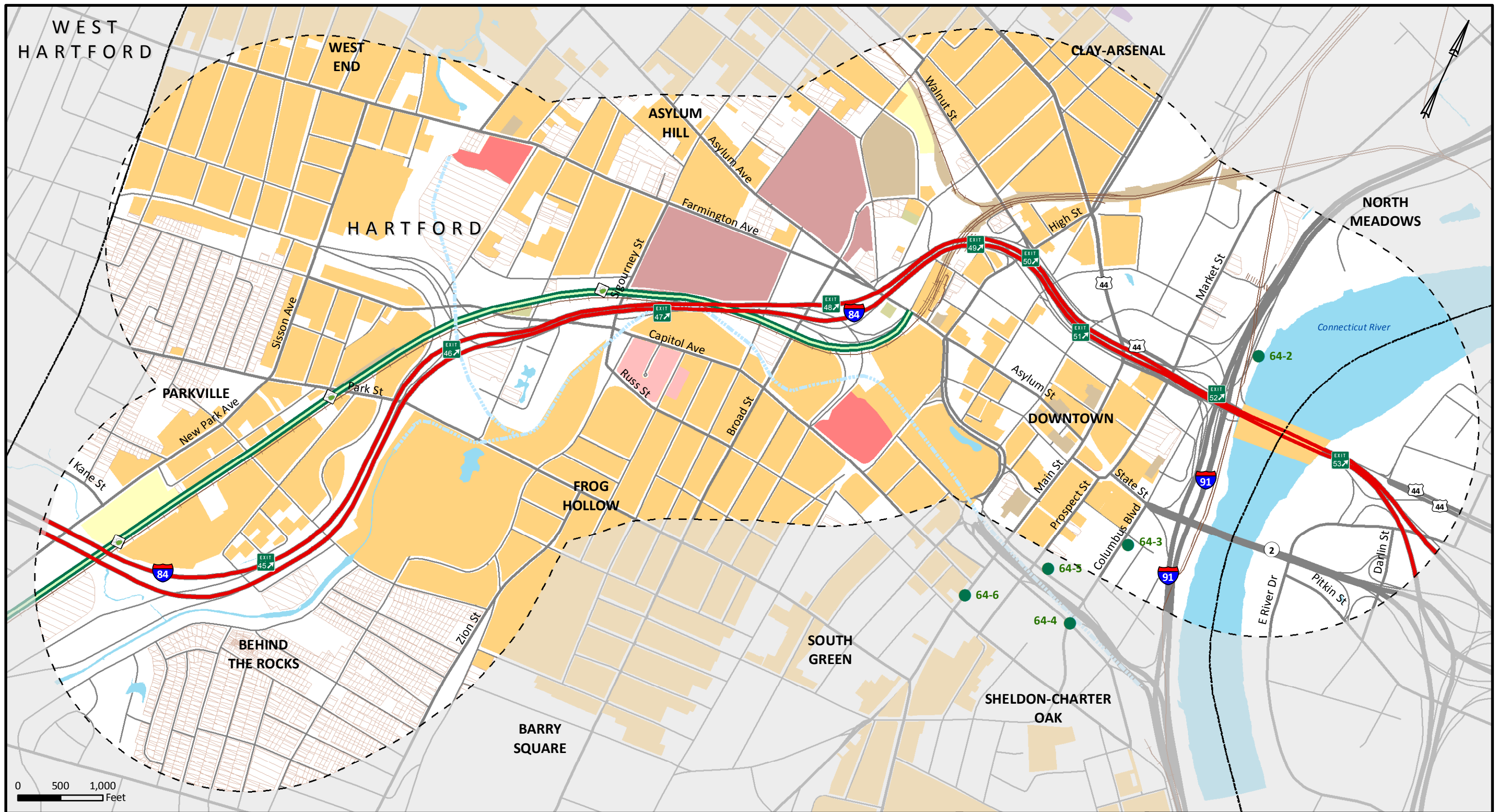


LEGEND I-84 Exit CT Fastrak Station I-84 Study Area City Boundary	Interstate Highway US Highway Major Road Local Road Railroad CT Fastrak	Park River Conduit Water Potential Historic Resource Potential State/National Register-Eligible Resource National Register-Eligible Resource Archaeological Site	Local Historic District National Historic Landmark, State/National Register-Listed State/National Register-Listed State/National Register-Listed (Demolished) State Register-Listed
---	--	---	---

Sources of Data: City of Hartford, CT DEEP, ESRI, National Register of Historic Places, CDOT

Notes: Colors/elements outside of study area muted intentionally. Potential historic resources are structures built more than 50 years ago.

The I-84 Hartford Project		
Historic and Archaeological Resources Map		
Date: 6/16/2015	Drawn By: AECOM	Figure No: 4-13

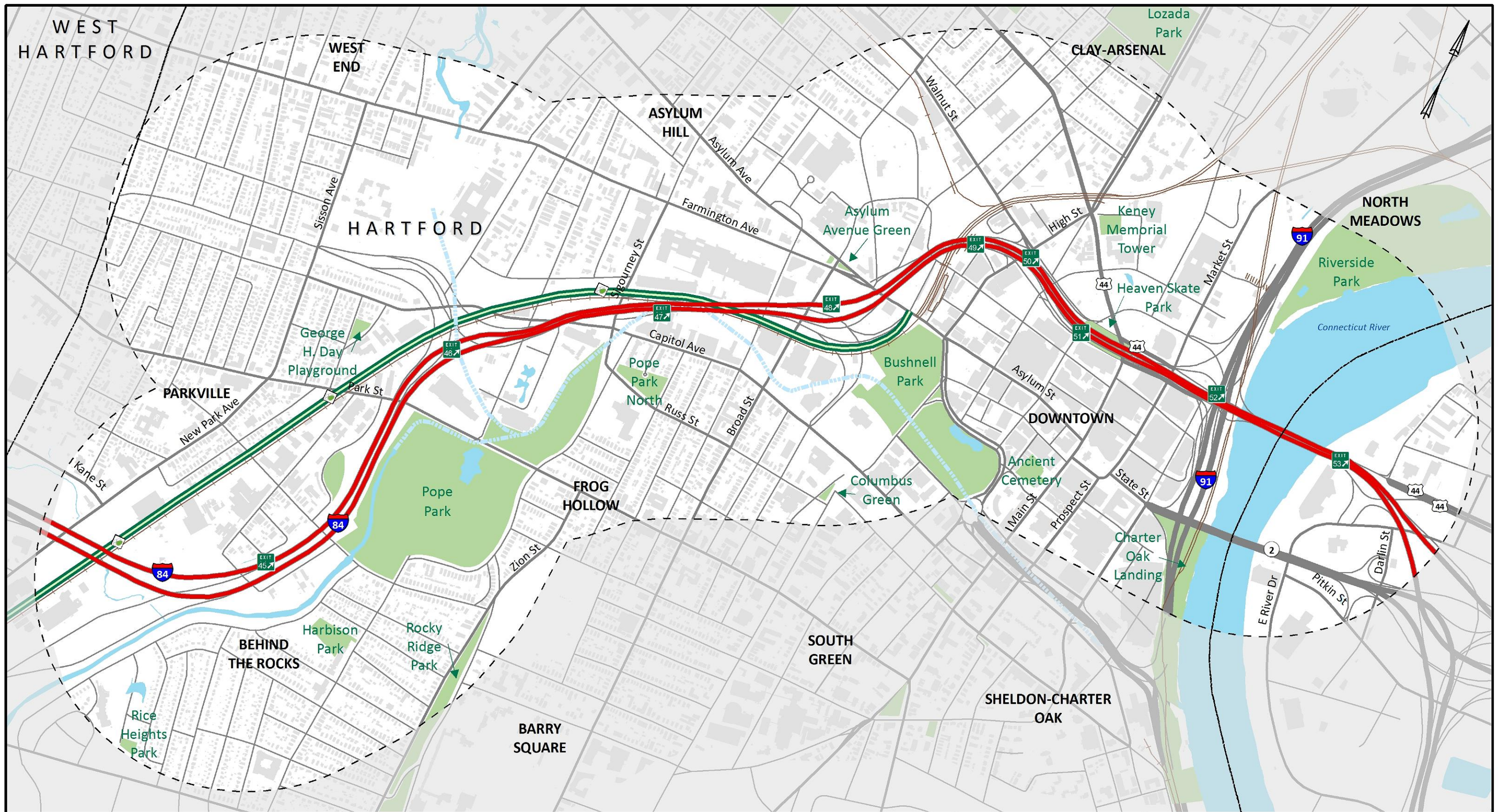


LEGEND I-84 Exit CT Fastrak Station I-84 Study Area City Boundary	Interstate Highway US Highway Major Road Local Road Railroad CT Fastrak	Park River Conduit Water Potential Historic Resource Potential State/National Register-Eligible Resource National Register-Eligible Resource Archaeological Site	Local Historic District National Historic Landmark, State/National Register-Listed State/National Register-Listed State/National Register-Listed (Demolished) State Register-Listed
---	--	---	---

Sources of Data: City of Hartford, CT DEEP, ESRI, National Register of Historic Places, CDOT

Notes: Colors/elements outside of study area muted intentionally. Potential historic resources are structures built more than 50 years ago.

The I-84 Hartford Project		
Historic and Archaeological Resources Map		
Date: 6/16/2015	Drawn By: AECOM	Figure No: 4-13



LEGEND

	I-84 Exit		Interstate Highway		Park River Conduit
	CT Fastrak Station		US Highway		Building Footprint
	I-84		Major Road		Water
	Study Area		Local Road		Park or Recreation Area
	City Boundary		Railroad		
			CT Fastrak		

Sources of Data: City of Hartford, ESRI

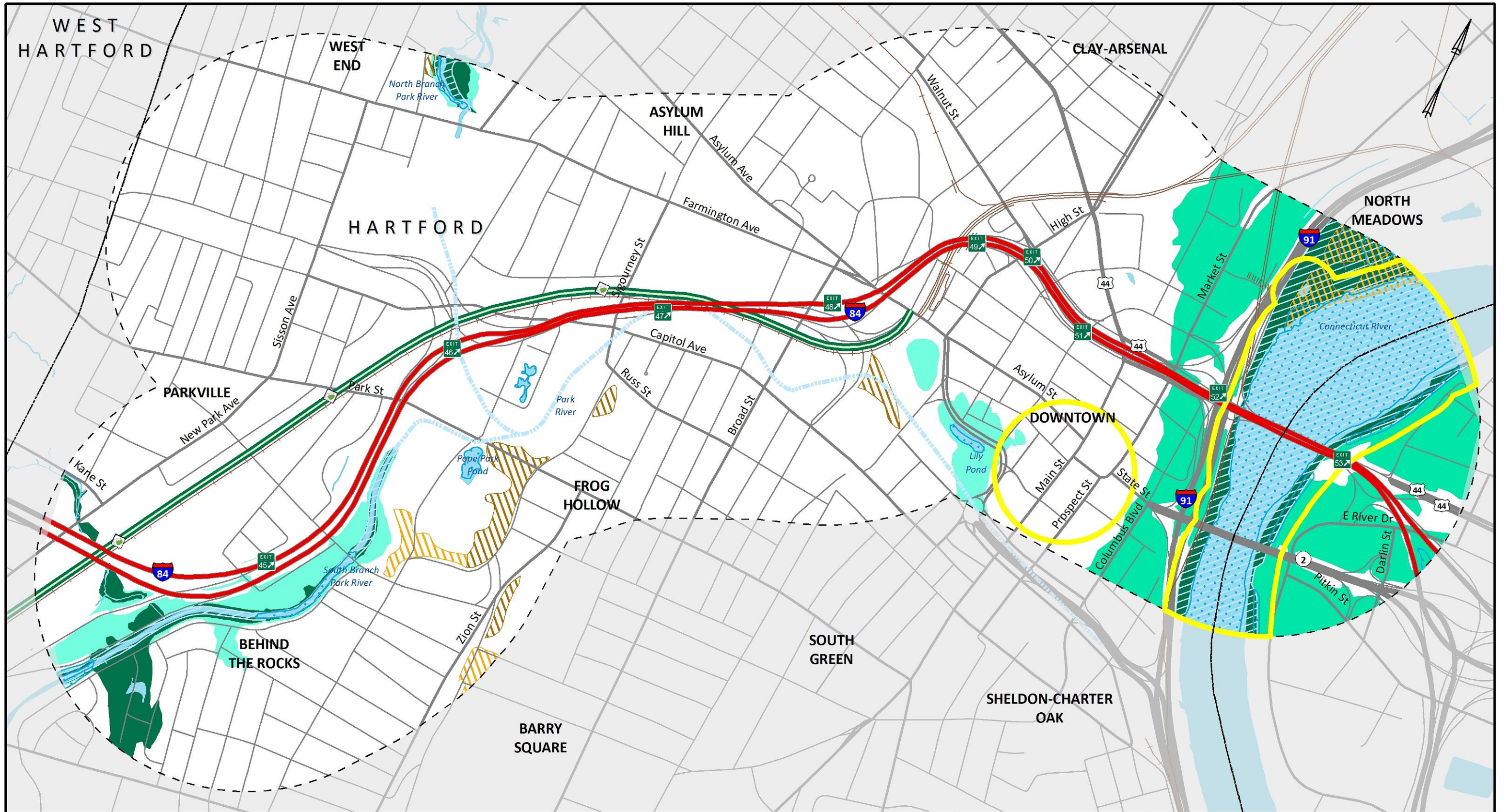
Notes: Colors/elements outside of study area muted intentionally.

0 500 1,000 Feet

The I-84 Hartford Project

Parks and Recreational Areas

Date: 1/30/2015 Drawn By: AECOM



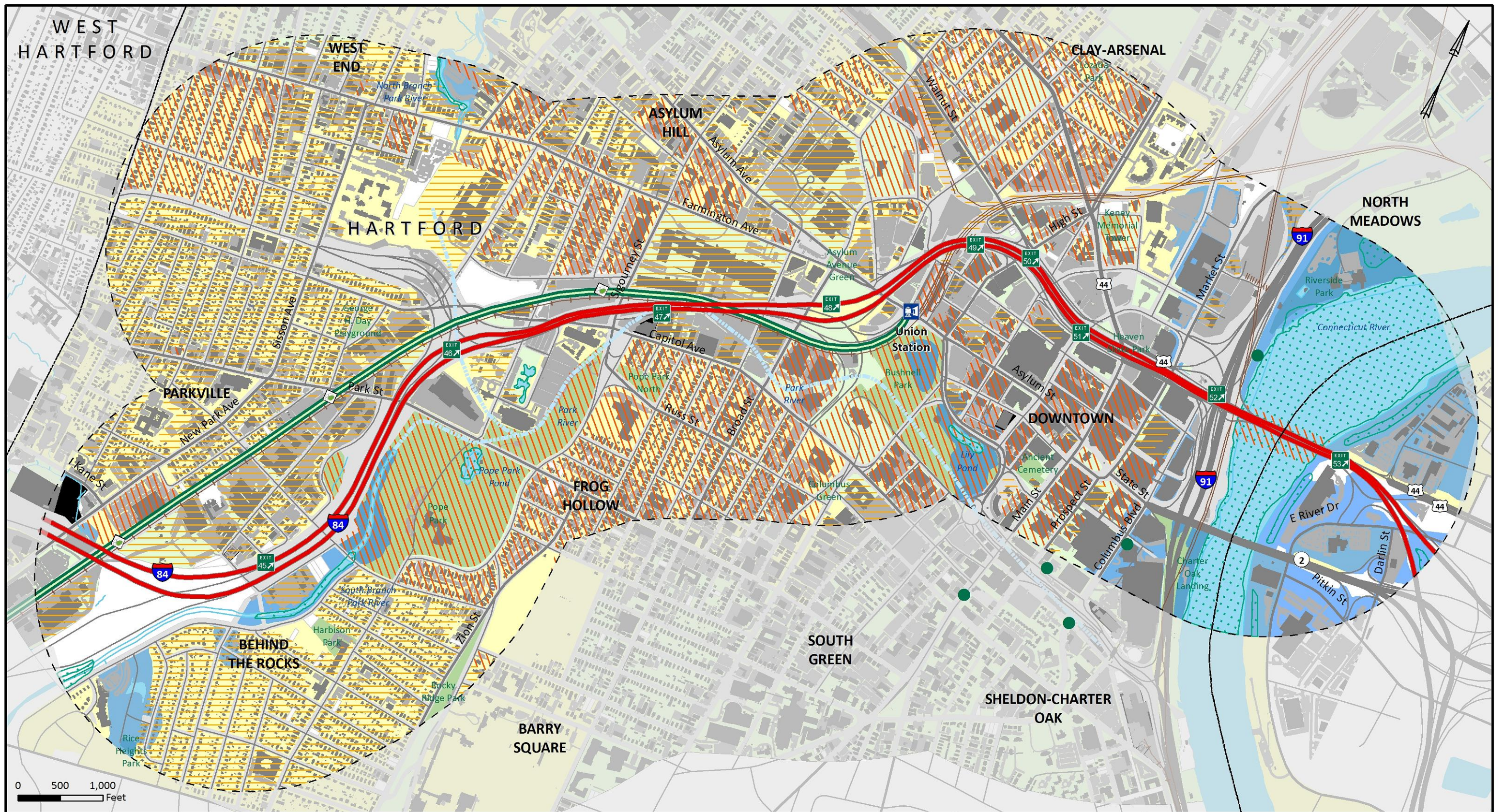
LEGEND	I-84 Exit	Interstate Highway	Park River Conduit	Surface Waters
	CT Fastrak Station	US Highway	National Wetlands Inventory	1% Annual Chance Flood Hazard
	I-84	Major Road	Natural Diversity Database State-Listed Species Habitat Polygon	Moderate Flood Hazard, Protected by Levee
	Study Area	Local Road	Prime Farmland Soil	0.2% Annual Chance Flood Hazard
City Boundary	CT Fastrak	Farmland Soil of Statewide Importance	Floodway	
	Railroad			

Sources of Data: City of Hartford, CT
DEEP, ESRI

Notes: Colors/elements outside of study area muted intentionally.

0 500 1,000 Feet

The I-84 Hartford Project	
Natural Environment	
Date: 11/20/2014	Drawn By: AECOM



	I-84 Exit		Interstate Highway		Building Footprint
	CT Fastrak Station		US Highway		Parking Lot
	Union Station		Major Road		Transportation Network Right-of-Way
	I-84		Local Road		Utilities
	Study Area		Railroad		Vacant
			CT Fastrak		City Boundary

	Park River Conduit		Archaeological Site
	Wetlands		Listed Historic Resource
	Surface Waters		Potential Historic Resource
	Floodway/Flood Zone		EJ Population
	Park		
	Greenspace		

Sources of Data: City of Hartford, ESRI, CT DEEP, National Register of Historic Places, CDOT, US Census Bureau 2010

Notes: Colors/elements outside of study area muted intentionally.

The I-84 Hartford Project

Study Area Constraints Map

Date: 1/30/2015	Drawn By: AECOM
-----------------	-----------------